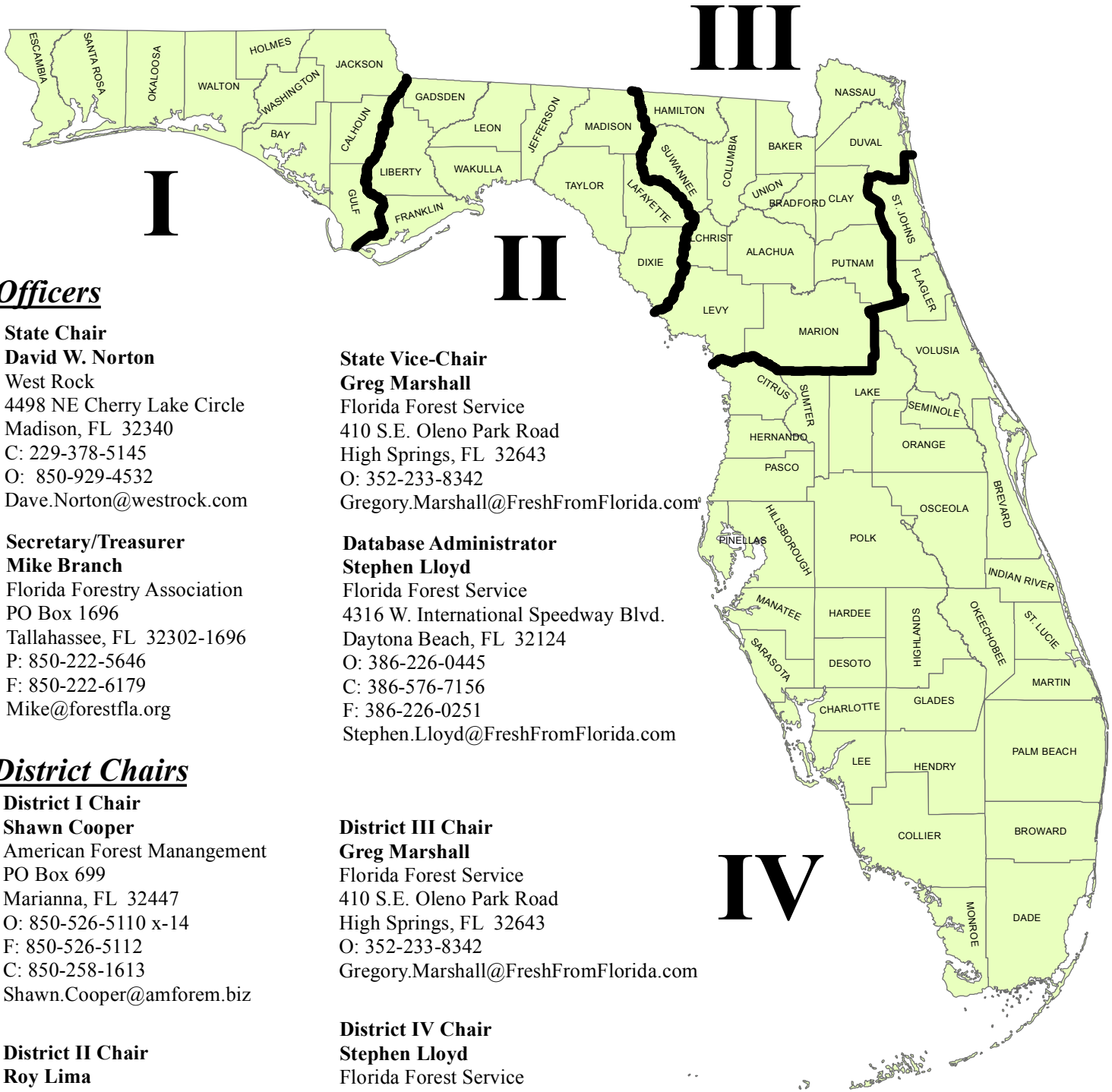




Florida Tree Farm Districts, Officers, and District Chairs

Administered by the Florida Forestry Association

Revised: Sept. 21, 2015



Officers

State Chair

David W. Norton

West Rock
4498 NE Cherry Lake Circle
Madison, FL 32340
C: 229-378-5145
O: 850-929-4532
Dave.Norton@westrock.com

Secretary/Treasurer

Mike Branch

Florida Forestry Association
PO Box 1696
Tallahassee, FL 32302-1696
P: 850-222-5646
F: 850-222-6179
Mike@forestfla.org

State Vice-Chair

Greg Marshall

Florida Forest Service
410 S.E. Oleno Park Road
High Springs, FL 32643
O: 352-233-8342
Gregory.Marshall@FreshFromFlorida.com

Database Administrator

Stephen Lloyd

Florida Forest Service
4316 W. International Speedway Blvd.
Daytona Beach, FL 32124
O: 386-226-0445
C: 386-576-7156
F: 386-226-0251
Stephen.Lloyd@FreshFromFlorida.com

District Chairs

District I Chair

Shawn Cooper

American Forest Management
PO Box 699
Marianna, FL 32447
O: 850-526-5110 x-14
F: 850-526-5112
C: 850-258-1613
Shawn.Cooper@amforem.biz

District II Chair

Roy Lima

Florida Forest Service
3125 Conner Blvd.
Tallahassee, FL 32399-1650
O: 850-681-5942
F: 850-681-5901
Roy.Lima@FreshFromFlorida.com

District III Chair

Greg Marshall

Florida Forest Service
410 S.E. Oleno Park Road
High Springs, FL 32643
O: 352-233-8342
Gregory.Marshall@FreshFromFlorida.com

District IV Chair

Stephen Lloyd

Florida Forest Service
4316 W. International Speedway Blvd.
Daytona Beach, FL 32124
O: 386-226-0445
C: 386-576-7156
F: 386-226-0251
Stephen.Lloyd@FreshFromFlorida.com